

# Professional Care Program

*Oral Health Management*

*A system of solutions*



# Ivoclar Vivadent

## Oral Health Management

*Strong and healthy teeth and healthy gums for a lifetime: This is the goal to which dental practitioners and their teams aspire and it is the dream of patients.*

### Oral Health Management

Healthy teeth should stay healthy. Restored teeth and denture teeth should receive the care they need. Oral health is vital to the overall health, personal development and well-being of everyone. Therefore, the need for professional and customized Oral Health Management solutions for patients of all ages is growing.

The quality products and services from Ivoclar Vivadent enable dental professionals to implement their treatment strategies safely, successfully and effectively. A coordinated product range composed of strong individual products offers the possibility of providing patients with customized Oral Health Management measures. The Professional Care range comprises diagnostic, therapeutic and oral care products. These products help to maintain all teeth, be they natural, restored or artificial, in good condition.

### Needs-driven programs

Professional Care products and other products from Ivoclar Vivadent including specialized services are available in different programs that are specifically geared to the treatment needs of different target groups.

### Full expertise

Recent international studies have intensively examined the importance of Professional Care products that cater to different patient groups. It has been shown that these products are a standard component of the product portfolio of many dental practices. Information about the benefits of the products and special tips regarding their application are supplied in the communication materials provided for the different target groups. This information helps to inform and treat patients appropriately.



### The programs

i-Kids®  
Ortho Care  
Implant Care  
Senior Care

### The patients

Children and adolescents  
Orthodontic patients  
Implant patients  
Seniors

# Contents

- *Healthy mouth*
- *Healthy teeth*
- *Healthy gums*

Ivoclar Vivadent offers a system of professional solutions.

4	<b>Plaque Test and CRT®</b> Focus on biofilm
6	<b>Proxyt®</b> Gentle removal of bacterial biofilms
8	<b>Fluor Protector</b> Superior protection against dental caries and erosion
10	<b>Cervitec®</b> Individualized protection for at-risk areas
12	<b>Helioseal®</b> Fissure sealants with power
14	<b>VivaSens®</b> Multiple protection for sensitive teeth
15	<b>OptraGate®</b> For a full view
16	<b>VivaStyle®</b> Serious whitening
18	<b>Ivoclar Vivadent</b> Oral Health Management
19	<b>Ivoclar Vivadent</b> Services



# Plaque Test and CRT®

*Focus on biofilm*



*Bacterial biofilm promotes the development of not only dental caries, but also of periodontal and periimplant diseases, gravely endangering the health of teeth and gums.*

## **Problem areas**

Plaque accumulates generally in areas that are difficult to clean. This problem, which affects the teeth and gums, is not easy to detect for the untrained eye. Modern tooth replacements such as implants require optimal oral hygiene practices to ensure their longevity. The success of the at-home measures is dependent on the instructions and assistance received from the dental practice.

## **Plaque Test – revealing the biofilm**

Plaque Test is used to selectively colour bacterial biofilm and make it visible. The fluorescent pigment does not react with teeth, soft tissue and restorations. Only the plaque-coated areas glow under the light of a polymerization unit, for example Bluephase® from Ivoclar Vivadent. The stained plaque makes it easier for the dental team to instruct patients on where and how to clean their teeth. This method is also used in the determination of plaque indices.

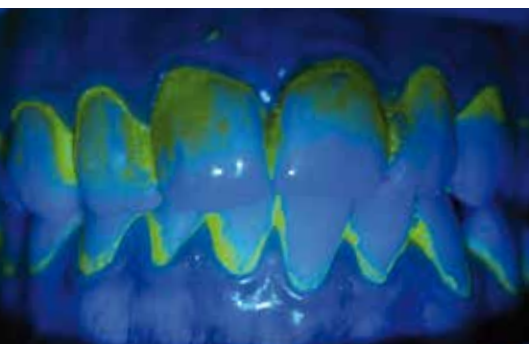
## **CRT® bacteria – tracking down microorganisms**

Microorganisms play a key role in the onset and progression of caries. High counts of mutans streptococci and/or lactobacilli can put natural and restored teeth at risk. The proven biological test CRT bacteria enables the clear identification and semi-quantitative determination of cariogenic germs. CRT bacteria provides important information about conditions in the mouth, before any changes in the tooth substance are detected. As a result, the appropriate countermeasures can be introduced at an early stage.



Picture: Prof. Dr S. Kneist, Germany

## **Plaque Test – the fluorescent disclosing liquid**



### **Advantages**

- Selective application
- Only the biofilm glows
- Fluorescent under any polymerization light

### **Benefits**

- No unsightly staining of the tongue, gums and mucous membrane
- Clear examination results
- Easy to integrate into routine procedures

Picture: Prof. Dr S. Kneist, Germany



# CRT bacteria | CRT buffer



## CRT bacteria – the test for determining mutans streptococci and lactobacilli in saliva and in plaque

Advantages	Benefits
Simultaneous determination of mutans streptococci and lactobacilli	Risk-based treatment
High level of selectiveness	Reliable, meaningful results
Root cause analysis	Early detection and prevention of caries

### CRT® buffer – focus on the protective function of saliva

The buffer systems contained in saliva are capable of neutralizing acids that can damage teeth. The buffering capacity of saliva is determined by means of the CRT buffer test. This test shows how well the buffering systems are doing their job.

## CRT buffer – the test for determining the buffering capacity of saliva

Advantages	Benefits
Easy and fast procedure	Active collaboration of the patient
Results are available after only five minutes	Rapid availability of information
Root cause analysis	Early detection and prevention of caries

### Special tip

- ▶ Bacterial biofilm can be selectively and gently removed with Proxyl® pastes, which are specially formulated for the professional cleaning and polishing of teeth. The OptraGate® lip and cheek retractor facilitates access to tooth surfaces.
- ▶ If CRT bacteria reveals a high level of infection with mutans streptococci, it is advisable to apply the chlorhexidine-containing protective varnish Cervitec® Plus in the dental office. This treatment can be backed up by the at-home use of Cervitec® Gel, which contains chlorhexidine and fluoride.

### Benefits for the dental team

- ▶ Comprehensive diagnostics
- ▶ Individualized recall intervals
- ▶ Risk-based treatment

### Benefits for patients

- ▶ Customized care
- ▶ Early detection
- ▶ Long-term preservation of teeth

### The scientific basis

- ▶ Caries and periodontal diseases are closely associated with bacterial plaque (Marsh & Martin 2003).
- ▶ The caries risk status of each patient should be determined on the basis of a clinical examination, a questionnaire and biological tests (Featherstone 2004).

# Proxyl<sup>®</sup>

## Gentle removal of bacterial biofilm

*Systematic professional cleaning and polishing of teeth, restorations and implants is essential in the prevention of caries, periodontal and periimplant diseases. Apart from the health benefits, professional tooth cleaning promotes "white" and "pink" esthetics. The teeth and gums look good.*

### Focus on individual needs

Proxyl<sup>®</sup> prophylaxis pastes allow patients to be treated according to their individual needs. Proxyl pastes clean effectively and gently. Unnecessary wear of tooth structure or roughening of restoration surfaces is avoided with Proxyl, as the pastes are available in three different abrasion levels:



**With fluoride** **Proxyl fine**  
(RDA 7)



**Proxyl medium**  
(RDA 36)



**Proxyl coarse**  
(RDA 83)



**Fluoride-free** **Proxyl medium**  
(RDA 36)



RDA = Relative Dentin Abrasion

Picture: Dr L. Enggist, Ivoclar Vivadent AG, Schaan, Liechtenstein





Taking gentle care of esthetic IPS e.max® Press restorations



Excellent "pink" and "white" esthetics  
Pictures: Dr A. Stiefenhofer, Ivoclar Vivadent AG, Schaan, Liechtenstein

### High-quality restorations maintain their lustre

In addition to hard and healthy dental enamel, significantly less resistant dentin and filling materials need to be cleaned. The use of harsh agents must be avoided, as they make surfaces look dull. Only smooth surfaces maintain their natural gloss. The fine Proxymet paste, which is free of pumice, is designed for cleaning and polishing high-quality surfaces. The paste cleans restorations and implants without scratching and leaves them looking beautiful and shiny.

### Protecting sensitive tissue

Periimplant tissue is much more sensitive than gingival tissue. Therefore, implant-supported restorations must be cleaned very gently with the fine Proxymet paste and soft rubber cups or brushes. Since implant patients need to have their teeth cleaned professionally on a regular basis for the rest of their life, this procedure should be as effective and gentle as possible.

### Accentuating esthetics

Professional cleaning with the fine Proxymet paste brings out the best in quality ceramic restorations: They maintain their natural lustre and healthy gums enhance the overall appearance.

### Special tip

- ▶ Bacterial biofilm can be made visible by staining it with the fluorescent disclosing liquid Plaque Test.

### Benefits for the dental team

- ▶ Long-term gentle quality assurance
- ▶ Well-being of patients
- ▶ High level of patient loyalty

### Benefits for patients

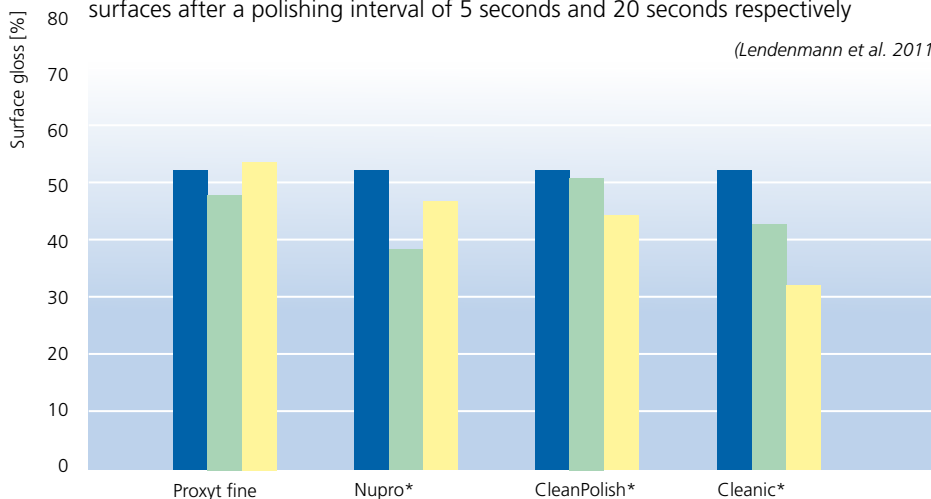
- ▶ Well-being
- ▶ Perceptibly smooth teeth
- ▶ Long-term beautiful teeth

### The scientific basis

- ▶ In contrast to several other prophylaxis pastes, the fine version of Proxymet maintains the smoothness of ceramic surfaces (Yazici et al. 2012).

### Effects of various fine prophylaxis pastes on nano-hybrid composite resin surfaces after a polishing interval of 5 seconds and 20 seconds respectively

(Lendenmann et al. 2011)



■ before ■ 5s ■ 20s  
\*) Not a registered trademark of Ivoclar Vivadent AG  
Source: R&D Ivoclar Vivadent AG, Schaan, 2011

Picture: Dr R. Watzke, Ivoclar Vivadent AG, Schaan, Liechtenstein



### Proxymet – the prophylaxis pastes

#### Advantages

- Defined abrasion values
- Xylitol
- Smooth consistency

#### Benefits

- Needs-oriented, gentle and effective cleaning and polishing
- Interruption of the bacterial metabolism
- Good adhesion to teeth and instruments

# Fluor Protector

*Superior protection against dental caries and erosion*

*In order to stay healthy and strong, teeth need to be supplied with fluoride throughout their lifetime.*

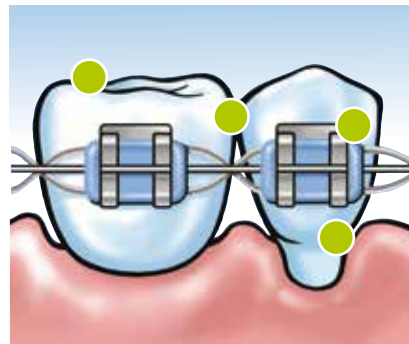
*In many cases, using a fluoride-containing toothpaste alone is not enough and additional treatment with fluoride is necessary. The professional application of a fluoride varnish is emphatically recommended by dental organizations.*

*The fluoride varnishes Fluor Protector and Fluor Protector S are ideally suitable for this purpose.*

## Comprehensive protection

The fluoride varnishes allow teeth to be professionally protected from:

- ▶ hypersensitivity
- ▶ caries
- ▶ erosion.



## Protection of problem areas

The low viscosity of Fluor Protector and Fluor Protector S ensures good flow and wetting properties. The varnishes spread easily and readily flow into complex surface structures. Problem areas such as

- ▶ exposed cervicals
- ▶ fissures
- ▶ proximal surfaces
- ▶ surfaces around brackets and bands
- ▶ filling and crown margins
- ▶ porous tooth surfaces

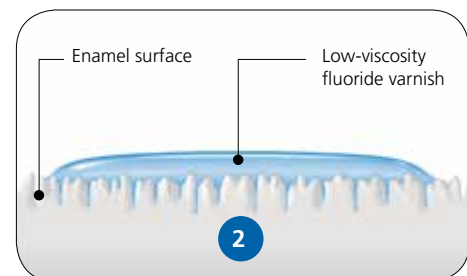
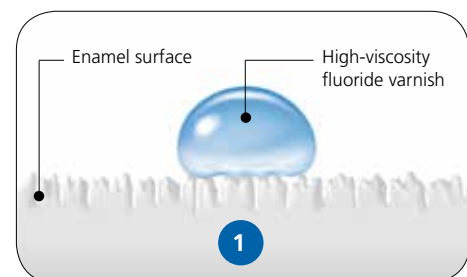
receive the required amount of fluoride and the protection it offers.

## For children and adults

Numerous international clinical studies and decades of practical experience confirm the effectiveness and the successful results of fluoride varnishes. Fluor Protector and Fluor Protector S are suitable for treating children, adolescents and adults. Due to their concentration, they are also suitable for treating pre-school children. The varnishes have been successfully tested under field conditions.

## For individual needs

Fluor Protector and Fluor Protector S differ in their composition, fluoride concentration and delivery form. They are designed to fulfil different treatment needs.



**1** Highly viscous fluoride varnishes sit on the tooth surface.

**2** The low-viscosity fluoride varnish spreads easily and readily penetrates into porous surfaces.







### Fluor Protector – the fluoride varnish with decades of experience

#### Advantages

1,000 ppm fluoride in a homogeneous solution; after the varnish has dried, the concentration is approx. ten times higher

Decades of experience

Clear, colourless

#### Benefits

For different age groups

Long-term clinical success

Optimum esthetics

### Fluor Protector S – the fluoride varnish in a dispensing tube

#### Advantages

7,700 ppm fluoride in a homogeneous solution; after the varnish has dried, the concentration is approx. four times higher

Mild taste and smell

Dispensing tube or Single Dose units

#### Benefits

Ready for immediate use

Recommended for sensitive patients

Efficient or individualized

### Fluor Protector Gel – the intensive care gel

#### Advantages

Calcium plus 1,450 ppm fluoride plus phosphate

Xylitol

Provitamin D-Panthenol

#### Benefits

Comprehensive protection for teeth

Interruption of the bacterial metabolism

Conditioning of gingival tissue

### Special tip

- ▶ The chlorhexidine-containing Cervitec® Plus varnish helps to reduce the high concentration of mutans streptococci in risk patients. This enhances the effectiveness of fluoride.

### Benefits for the dental team

- ▶ Highly effective fluoride varnishes and intensive care gel
- ▶ Solutions for individual needs
- ▶ Fast treatment

### Benefits for patients

- ▶ Fast, comfortable treatment
- ▶ Clinically proven method
- ▶ Long-term beautiful teeth

### The scientific basis

- ▶ The routine application of a fluoride varnish during the treatment with fixed orthodontic appliances may reduce the development of white-spot lesions in the vicinity of brackets (Stecksén-Blicks et al. 2007).
- ▶ Fluor Protector Gel may protect dental enamel against demineralization (Ziebolz et al. 2010).



# Cervitec®

*Individualized protection for at-risk areas*

*Standard oral hygiene measures and professional tooth cleaning and fluoridation are not adequate to protect the teeth from harm in patients with high bacteria counts. In these cases, it is necessary to selectively reduce the number of cariogenic germs.*

## **Cervitec® gives microorganisms a hard time**

A very high number of certain germs in the mouth compromises the health of the teeth, gums and mucous membrane. Furthermore, the condition of implants, dentures and restorations is also at risk. The active ingredient chlorhexidine is capable of minimizing this risk.

The chlorhexidine-containing Cervitec products offer individualized in-office and at-home solutions, in terms of the active-ingredient concentration, the delivery form and the application method.

- ▶ Cervitec Plus, the protective varnish
- ▶ Cervitec Gel, the oral care gel
- ▶ Cervitec Liquid, the mouth rinse



*Cervitec Plus for at-risk areas  
Pictures: Dr R. Watzke, Dr A. Peschke,  
Dr F. Zimmerling, Ivoclar Vivadent AG,  
Schaan, Liechtenstein*





Cervitec Liquid, the mouth rinse



### Cervitec Plus – spot-on effectiveness

#### Advantages

1% chlorhexidine plus 1% thymol in a homogeneous solution; after the varnish has dried, the concentration is approx. ten times higher

Professional varnish application

Optimum flow and wetting behaviour

#### Benefits

Effective bacterial control

Selective protection of susceptible areas

Treatment of difficult-to-reach areas

### Cervitec Gel – efficient distribution

#### Advantages

0.2% chlorhexidine plus 900 ppm fluoride

Smooth consistency

Mild taste

#### Benefits

Powerful combination for the application on the gingiva, periimplant tissue, mucous membrane and teeth

Optimum distribution on complex surfaces

High level of patient compliance

### Cervitec Liquid – powerful without alcohol

#### Advantages

0.1% chlorhexidine plus xylitol plus essential oil

Alcohol-free

Pleasant taste

#### Benefits

Reduction of bacterial growth

Suitable for sensitive patients

High level of patient compliance

### Special tip

- ▶ Patients can enhance the effect of the professional treatment with Cervitec Plus by using Cervitec Gel at home.

### Benefits for the dental team

- ▶ Customized germ-fighting solutions
- ▶ Clinically proven preparations
- ▶ Easy to integrate into the treatment regime

### Benefits for patients

- ▶ Pleasant taste of all Cervitec products
- ▶ Products recommended by dental professionals
- ▶ Painless treatment

### The scientific basis

- ▶ The antimicrobial effect of chlorhexidine varnishes and their ability to protect tooth surfaces that are susceptible to caries has been proven (Zhang et al. 2006).

Protection of removable denture prosthetics  
Picture: Dr F. Zimmerling  
Ivoclar Vivadent AG, Schaan, Liechtenstein



# Helioseal®

## Fissure sealants with power

*Pits and fissures are exposed to a high caries risk. Because of their complex shape, even the most thorough dental hygiene practices are very often inadequately effective in these areas. Tight sealing protects these highly susceptible surfaces.*

### No chance for toothbrushes

The intricate profile of fissures prevents the bristles of toothbrushes from reaching the bottom of these structures. Consequently, harmful bacteria can colonize these sites. Food and beverages provide a constant supply of carbohydrates. As a result, caries can develop unchecked.

### Targeted defence through sealing

Sealing with Helioseal® protects these highly susceptible tooth surfaces. Helioseal covers pits and fissures with an impenetrable coating. The sealant closes up the retention niches where bacteria live and cuts off the carbohydrate supply that sustains them. What is more, the smooth surfaces that are produced with the sealant are easy to keep clean.

### Three fissure sealants for highest clinical demands

Three light-curing resin-based Helioseal sealants are available to fulfil the different sealing needs. The sealants differ from one another in terms of their delivery form and their viscosity, colour and fluoride content. However, they all show the same high clinical performance.



- ▶ Helioseal – the classic sealant
- ▶ Helioseal F – the sealant with fluoride
- ▶ Helioseal Clear – the clear sealant

Helioseal	Helioseal F	Helioseal Clear
Pigmented	Pigmented	Clear, colourless
Without fluoride	With fluoride	Without fluoride
Without filler, low viscosity	40% filler content, higher viscosity	Without filler, low viscosity



The bristles of the toothbrush do not reach the bottom of the fissure.



Tight sealing of the fissure with Helioseal

Picture: Professor Dr S. Zimmer, Germany

# Helioseal - Helioseal F - Helioseal Clear

## Helioseal – the proven fissure sealants

### Advantages

Long-term successful clinical experience

Tight bond to enamel

Resistance against cariogenic bacteria

### Benefits

Reliability

Long-lasting retention

Effective protection against caries

### Special tip

- ▶ The enamel areas adjacent to the sealed surfaces can be protected with the fluoride-containing varnish Fluor Protector S.

### Benefits for the dental team

- ▶ Many years of clinical experience
- ▶ Long-term retention
- ▶ Reliability

### Benefits for patients

- ▶ Effective protection against caries
- ▶ Clinically proven sealant
- ▶ Long-term preservation of teeth

### The scientific basis

- ▶ Sealants should be an integrated component of caries management plans in the treatment of pits and fissures (Splieth et al. 2009).



# VivaSens®

## Multiple protection for sensitive teeth

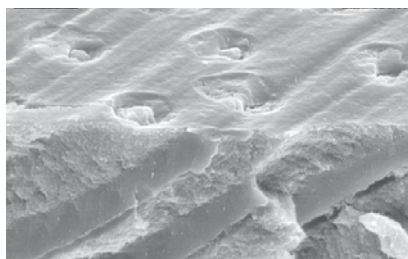
*Not just painful,  
hypersensitive teeth  
can also lead to  
the neglect of oral  
hygiene.*

### Exposed cervicals

In many cases, the cause of the complaints can be traced to exposed root surfaces with open dentin tubules. External stimuli such as hot and cold substances directly affect the unprotected tooth structure and trigger pain.

### Protective shield

VivaSens® is a film-like varnish that creates a protective shield against uncomfortable stimuli. Its innovative formulation combines a variety of synergistic mechanisms. Calcium and protein precipitates are formed, which tightly seal the dentin tubules.



### Relief for many patients

VivaSens offers patients fast relief of the pain associated with hypersensitive teeth. The causes of sensitivity are manifold:

- ▶ gingival recession
- ▶ tooth whitening
- ▶ professional tooth cleaning
- ▶ scaling and root planing
- ▶ periodontal diseases
- ▶ bruxism
- ▶ erosion.

### Special tip

- ▶ The latex-free lip and cheek retractor OptraGate® provides easy access to the treatment field.

### Benefits for the dental team

- ▶ Individual, professional treatment
- ▶ Desensitizer for preventive and therapeutic measures
- ▶ Satisfied patients

### Benefits for patients

- ▶ Fast relief of pain
- ▶ Increased motivation for oral hygiene
- ▶ Long-term tooth preservation

### The scientific basis

- ▶ VivaSens forms compact precipitates. It coats the entire dentin surface and seals the dentin tubules completely (Al-Saud & Al-Nahedh 2012).



**VivaSens – for sensitive teeth**

### Advantages

Tight sealing of open dentin tubules  
Optimum flow and wetting behaviour  
Potassium fluoride

### Benefits

Fast relief of pain  
Deep penetration of active substances  
Supplementary protection



# OptraGate®

*For a full view*



*A full view of the working area saves treatment time and heightens the safety of dental procedures.*

*The latex-free lip and cheek retractor OptraGate® retracts the lips and teeth around the entire circumference of the mouth.*

*The oral cavity and the teeth are easy to reach.*

## Invaluable auxiliary

OptraGate provides unhindered access to the oral cavity and enables dental professionals to work efficiently, knowing that their patients are comfortable during the following procedures:

- ▶ dental examination
- ▶ application of Plaque Test
- ▶ professional cleaning and polishing of the teeth
- ▶ fissure sealing
- ▶ application of protective varnishes
- ▶ tooth whitening.

This saves everyone involved precious time.

## Special tip

- ▶ OptraGate facilitates in-office tooth whitening procedures with the VivaStyle® Paint On Plus bleaching varnish.

## Benefits for the dental team

- ▶ Improved access to the treatment field
- ▶ Efficient treatment
- ▶ Wide range of applications

## Benefits for patients

- ▶ Latex-free
- ▶ Comfortable retraction of the lips and cheeks
- ▶ Fast treatment

## Practical evidence

- ▶ OptraGate is mostly used in bleaching procedures, the placement of highly esthetic anterior fillings and in professional tooth cleaning measures (Survey taken by Ivoclar Vivadent in 2006).



## OptraGate – the comfortable lip and cheek retractor

Advantages	Benefits
Three-dimensional flexibility	Keeping the mouth open is easy
Recesses for the lip frenula	High level of comfort for patients
Available in different sizes	Individualized fit

## Serious whitening

*Naturally white teeth – a desire frequently voiced by patients. In order to fulfil this wish, Ivoclar Vivadent offers sophisticated, high-quality materials in light colours: for example, Tetric EvoCeram®, IPS Empress® and IPS e.max®. In addition, VivaStyle® is available for lightening undesirable stains in natural teeth.*

### Professional decisions

Various treatment options are available in accordance with the diagnosis and the individual patient needs:

- ▶ in-office or at-home treatment
- ▶ application of various active ingredient concentrations:
  - varnish system for direct application with a brush
  - gel for application with a custom-made tray.

### VivaStyle Paint On Plus

Intensive treatments can be undertaken in the dental practice to produce fast whitening results. For this purpose, VivaStyle Paint On Plus is applied several times in succession during one appointment (Mata & Marques 2006).

Starting situation



Situation after tooth whitening



After restoration\*



\*Restoration with IPS e.max Press veneers 22-21  
Dr L. Enggist, J. Seger, Ivoclar Vivadent AG,  
Schaan, Liechtenstein



VivaStyle Paint On Plus







VivaStyle® 10% | 16%

**VivaStyle Paint On Plus – effective lightening without a tray**

Advantages	Benefits
Varnish system containing 6% hydrogen peroxide	Controlled application and action on the right spot
Fast release of active ingredients	Only ten minutes per application
Provitamin D-Panthenol	Conditioning of the gingiva

**Special tip**

- ▶ During and after tooth whitening, it is advisable to use Fluor Protector Gel, which contains calcium, fluoride and phosphate.

**Benefits for the dental team**

- ▶ Solutions for individual needs
- ▶ Clinically proven
- ▶ Possibility of introducing further dental services

**VivaStyle – the gel-based products**

Advantages	Benefits
Various concentrations for in-office and at-home treatments: 16% and 10% carbamide peroxide*	Solutions for individual needs
Smooth consistency	Excellent wetting of teeth
Potassium nitrate	Less sensitivity

**Benefits for patients**

- ▶ Professionally recommended products
- ▶ A range of products for individual needs
- ▶ Gentle whitening

**The scientific basis**

- ▶ VivaStyle Paint On Plus has been proven to effectively lighten teeth (Mata & Marques 2006).

\*16% | 10% carbamide peroxide corresponds to 5.8% | 3.6% hydrogen peroxide.



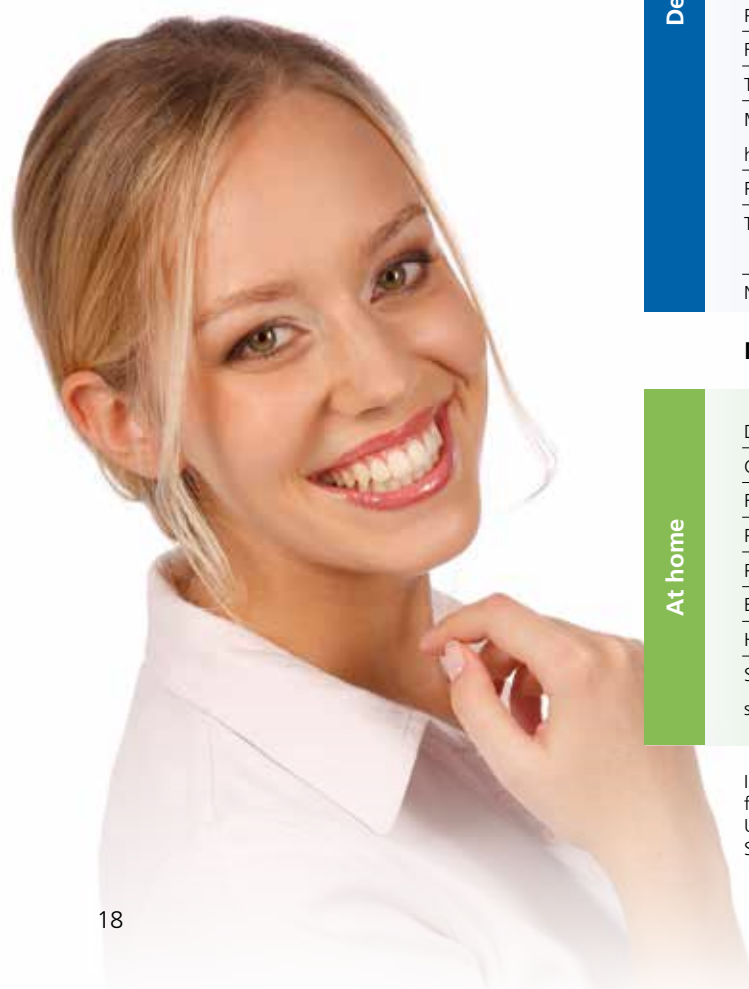
VivaStyle® 10% | 16%



# Ivoclar Vivadent

## Oral Health Management

The Professional Care Program from Ivoclar Vivadent offers a system of professional solutions.



Evaluation		Low Caries Risk	High Caries Risk	
Findings	Plaque accretion	Plaque Test	✓	
	Initial lesion		✓	
	Mutans streptococci (CFU/ml saliva)	CRT bacteria	< 10 <sup>5</sup>	≥ 10 <sup>5</sup>
	Lactobacilli (CFU/ml saliva)	CRT bacteria	< 10 <sup>5</sup>	≥ 10 <sup>5</sup>
	Salivation rate (ml saliva/min)	CRT bacteria	≥ 1	< 0,7
	Buffer capacity	CRT buffer	high	low

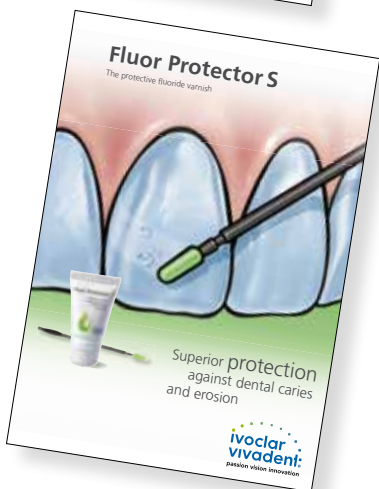
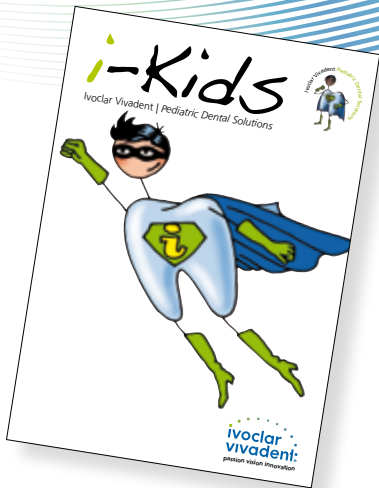
Recommended treatment				
Dental practice	Targeted recording of case history		✓	
	Check-ups		✓ 2x/yr	
	Re-assessment of caries risk	CRT bacteria	✓	✓
		CRT buffer	✓	✓
	Bitewing X-ray for the early detection of proximal caries		✓	✓
	Restoration of carious lesions	Tetric EvoCeram	✓	✓
		Tetric EvoFlow	✓	✓
		Bluephase	✓	✓
	Reconstruction	IPS Empress	✓	✓
		Variolink II	✓	✓
	Removal of plaque retention sites		✓	✓
	Protection of exposed cervicals	VivaSens	✓	✓
	Fissure sealing	Helioseal		✓
	Topical fluoride application	Fluor Protector	✓ 2x/yr	✓ 4-6x/yr
	Motivation and instruction for oral hygiene improvement		✓	✓
	Professional tooth cleaning	Proxyt, OptraGate	✓	✓
Topical application of chlorhexidine	Cervitec Plus		✓	
	Cervitec Gel		✓	
Nutrition counselling			✓	

Measures				
At home	Dentifrice containing fluoride		✓	
	Cleaning of interdental spaces		✓	
	Rinsing solution or gel containing fluoride	Fluor Protector Gel		✓
	Preparations with chlorhexidine	Cervitec Gel, Cervitec Liquid		✓
	Preparations with bicarbonate			✓
	Balanced diet		✓	✓
	Hard-to-chew food			✓
	Sweets and chewing gum with sugar substitute	Wrigley's ORBIT sugarfree gum		✓

In cooperation with the Centre for Dentistry and Oral Medicine, University Clinic Jena, Friedrich-Schiller University of Jena, Germany

# Professional Care

*Quality products and services*



## **Our service to you and your patients: We are happy to assist you.**

You can provide all teeth, be they healthy, restored or artificial, with the care that they need to last a long time. The Professional Care product range, which includes diagnostic, preventive, therapeutic and dental care products, will support you in building up a long-lasting relationship with your patients. A wide array of services backs up the Professional Care product range from Ivoclar Vivadent.

## **We offer you**

### **▶ Information for the dental team**

- ▶ brochures
- ▶ flow charts
- ▶ treatment plans
- ▶ study results
- ▶ documentation
- ▶ articles
- ▶ videos
- ▶ presentations

### **▶ Information for patients**

- ▶ brochures and stands
- ▶ posters
- ▶ articles
- ▶ information cards
- ▶ treatment cards
- ▶ clips for the waiting room
- ▶ i-Kids materials

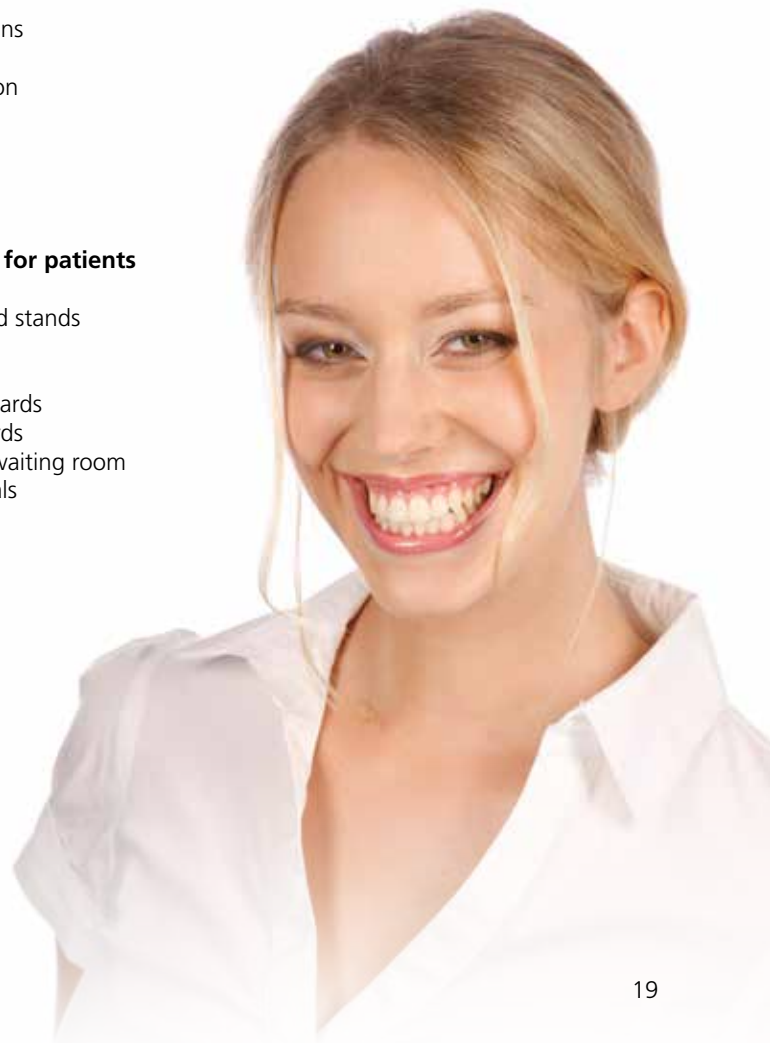
## **▶ Information on education and training**

We offer dental professionals a range of education and training measures. The dates of upcoming seminars, workshops, trade fairs and other events are provided on the Ivoclar Vivadent website or will be sent to you on request.

## **Special tip**

Pay us a visit on the Ivoclar Vivadent website. There you will find more information about Ivoclar Vivadent products and product systems for

- ▶ direct restorative therapy
- ▶ fixed prosthetics
- ▶ removable denture prosthetics.



# Ivoclar Vivadent

*For a bright and healthy smile*

*To satisfy your esthetic dentistry needs, Ivoclar Vivadent offers quality restorative and prosthodontic materials, such as Tetric EvoCeram®, IPS Empress®, IPS e.max® and SR Phonares® II. These products will allow you to fulfil your own personal standards as well as the individual requirements of your patients regarding function and esthetics. Teeth and mouth require professional Oral Health Management solutions to meet these high standards. Ivoclar Vivadent is there to assist you.*



Production and Distribution:  
**Ivoclar Vivadent AG**  
Bendererstrasse 2  
FL-9494 Schaan  
Liechtenstein  
Tel. +423 235 35 35  
Fax +432 235 33 60  
[www.ivoclarvivadent.com](http://www.ivoclarvivadent.com)

Descriptions and data constitute  
no warranty of attributes.

Printed in Germany  
© Ivoclar Vivadent AG, Schaan, Liechtenstein.  
668882/2014-05-26/e

**ivoclar**  
**vivadent**  
passion vision innovation