

**New**

# Diamond-coated oscillating Files and Strips & Intensiv Swingle



Smooth contoured surfaces

Controlled enamel reduction  
(approximal stripping)

Precise borders of preparations

- Controlled minimal invasive finish of preparations
- Simple use and precise results
- No iatrogenic damage

# Intensiv Oscillating files and strips & Intensiv Swingle



1:1

In case of abutments and cavities preparation, as well as restoration materials finishing, the most utilized system in the dental office is based on rotating instruments use; there are, however, precise limits within which a rotating instrument cannot be used, functions limitedly or is potentially dangerous due to limited control.

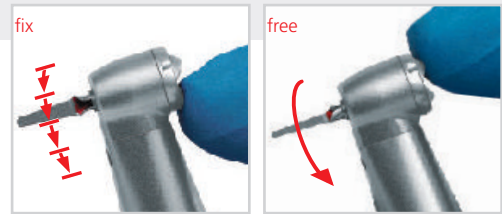
These problems are particularly evident for:

- **Finishing of interproximal and subgingival areas**, because it is possible to harm the walls of adjacent teeth or periodontal tissues during surplus elimination and ridge lap restorations or during the bevel of the edges of oversized crowns.
- **Finishing of cavity margins**, where incorrect use of the rotating tool can lead to irregular shapes and edges or to extensions bigger than necessary with the unnecessary sacrifice of healthy tooth substance, as well as damaging the walls of the teeth adjacent to the preparation.
- **Chamfering of the preparation edges and of cavities**, where rotating instruments are used with great caution because they can affect the adjacent tooth or cause excessive irregularities of the preparation edge and accidental fractures of enamel prisms.
- **Removal of sub gingival plaque**, when the shape and size of the instruments used for root grinding limit the reaching of deeper periodontal pockets.
- **Orthodontic stripping**, since the interproximal reduction of the enamel through rotating instruments raises the risk of obtaining a non-uniform surface with irregularities, difficulty in controlling exactly the thickness of the removed part and the need for subsequent finishing / polishing interventions.

In all of these cases it is appropriate to accompany the use of rotating instruments with complimentary systems that reduce the risk of potential iatrogenic injury, improving the quality of the surfaces being worked on. The principle of the oscillating file is based on the transformation of a rotating motion into a reciprocal movement obtained through appropriate hand piece.

## The new contra-angle Intensiv Swingle

For the use of oscillating files and strips. The contra-angle Intensiv Swingle has 2 functions in conjunction: free rotating position for the use of diamond coated files like Intensiv Proxoshape and fixed position for the use of diamond coated strips like Intensiv Ortho-Strips. A simple to move toggle switch at the contra-angle head permits to choose between free rotating or fixed position of the files. The contra-angle head is of small size to allow a proper view on the operating field. The ergonomic design of the contra angle results in a good grip and allows a well-directed positioning to the operating field.



2 functions with 1 contra angle only



**New**

1:1

### Product description:

- Contra-Angle with integrated spray and light
- Stroke 0.9 mm; 20.000 oscillating movement with 40.000 rpm
- With toggle switch to choose free rotating or fixed position of files
- 12 different positions on 360°
- File ejector and cleaning needle (water spray canals) are included in delivery

### Indications:

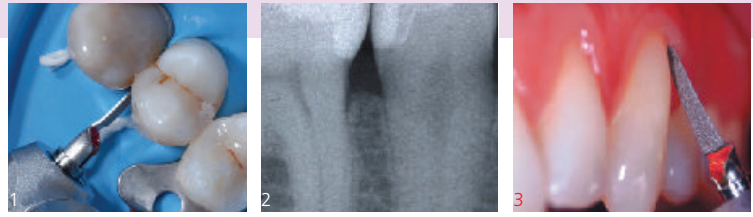
- Use with oscillating files for precise minimal invasive finish of preparations
- Use with oscillating strips for interproximal enamel reduction (during IPS procedures in orthodontics)

### Benefits:

- 2 applications with 1 contra-angle only, free rotating or fixed position of oscillating files
- Extensive view on the operating field due to small size contra-angle head and light
- 20,000 oscillating strokes per minute for better cutting and polishing efficiency

# Intensiv Proxoshape

Clinically tested by the Universities of Zurich and Bern, Switzerland



Optimally adapted and polished proximal filling surfaces or crown margins are a prerequisite for health maintenance of the periodontium and prevention of secondary caries. Proxoshape meets the requirements for precise finishing of the filling surfaces and margins and prepares them for final polishing.

- The ideal flexibility of the Proxoshape files allows perfect adaptation to the tooth morphology and restoration with excellent work sensitivity.
- The small thickness and the wide range of lengths and sizes allow precise and safe work in areas difficult to access.
- The single-side diamond coating makes the job safer, avoiding damage to the gum tissue and adjacent teeth.
- The exact micrograin sizes foster precise work, well-defined and better finished edges, without marginal micro fractures, and with perfectly smooth surfaces.

- 1) Contouring of the surface below the restored contact point without damaging the adjacent tooth with file PS3
- 2) Perfectly finished interproximal areas
- 3) Finishing of the cervical filling margin with instrument PS2L



To be used in combination with:

- Intensiv Swingle, WG-69 LT Cons (with light)

1:1



Proxoshape Set

<b>Ref. 100</b>				
µm	125	90	40	15
524		PS1		
534	■	PS0		
514	■		PS2	
504	■			PS3

- Packaging
- Single File
  - 6 pieces (Ref. .../6)
  - 12 pieces (Ref. .../12)

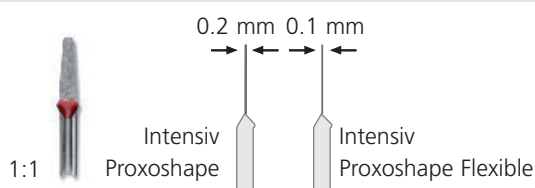
Proxoshape Set Optional

<b>Ref. 115</b>										
L mm	8,5	8,5	8,5	8,5	11,0	11,0	11,0	8,5	8,5	3
µm	125	90	40	15	90	40	15	40	15	15
524		PS1			PS1L					
534	■	PS0								
514	■		PS2			PS2L		PS2S		
504	■			PS3			PS3L		PS3S	PS3G



# Intensiv Proxoshape Flexible

Clinically tested by the University of Zurich, Switzerland



## Product description:

- 3 single-sided diamond files in 60µm (brown), 40µm (red) and 15µm (yellow)
- 2 file lengths: 8.5 mm and 11 mm
- Minimal file thickness 0.1 mm
- Sterilizable

The contouring in aesthetic restorations in proximal zones is necessary to achieve an ideal morphology of the restoration. Appropriate instruments are required, which adapt perfectly to restoration surfaces while avoiding iatrogenic damage to adjacent tooth. The Intensiv Proxoshape Flexible file is, due to its minimal file thickness of 0.1 mm, so thin that difficult to access interdental spaces can be treated. Intensiv Proxoshape Flexible allows easier access to the interdental space. In addition, the thin file is sufficiently flexible to adapt to the partially concave surfaces.

## Indications:

- Finishing and polishing of aesthetic restorations with difficult to access proximal areas.
- Excess (filling-cements, overhangs) removal on restoration surfaces

## Benefits:

- Simplified access to the interdental space
- Improved adjustment to the proximal filling morphology
- No iatrogenic damage to adjacent tooth due to one side diamond-coating
- Prevention of irregular surface waves created by use of rotating instruments
- Reusable

1-3) Clinical pictures: University of Zurich, Switzerland



To be used in combination with:

- Intensiv Swingle, WG-69 LT Cons (with light)

1:1

## Packaging

- Single File
- 6 pieces (Ref. .../6)
- 12 pieces (Ref. .../12)

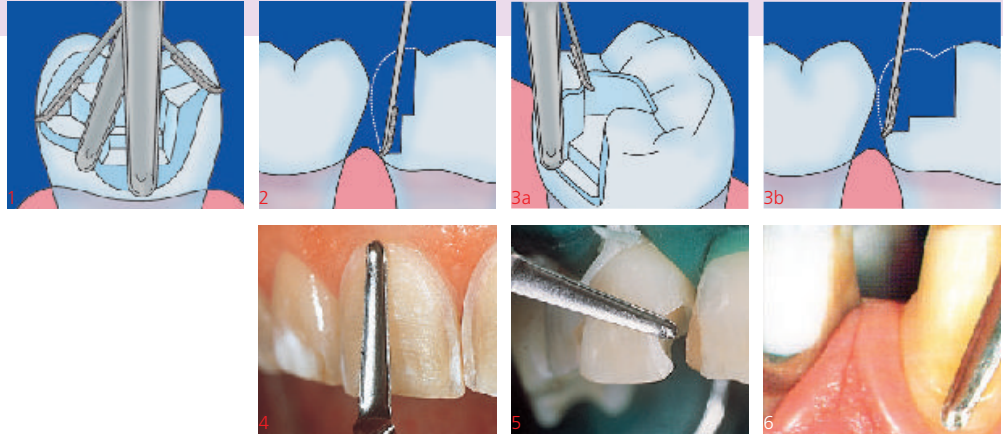


<b>Ref. 110</b>							
L mm		8.5	8.5	8.5	11.0	11.0	11.0
µm		60	40	15	60	40	15
514		PSF60			PSF60L		
514			PSF40			PSF40L	
504				PSF15			PSF15L



# Intensiv Bevelshape

Clinically tested by the University of Bern, Switzerland



A key factor for an ideal cavity preparation for composite fillings, gold inlays and overlays is a precise margin beveling with sharp edges.

In the case of prosthetic restorations, the margin finishing of shoulder preparations and the bevelling of chamfer preparations are decisive for the quality of the result. The single-side diamond coating helps to prevent iatrogenic damage to adjacent teeth and injury to periodontal tissue.

- 1) The direction of the file can be locked into 12 different positions
- 2) Chamfering of the preparation margin without harming tissues
- 3a+3b) Chamfer of cavity margin
- 4) Margin finishing in veneer preparation with BS40 or BS40T
- 5) Margin bevelling in class IV restorations
- 6) Margin finishing in chamfer preparation



1:1

The files have a slight axial curvature, rounded tip and three different sizes: diamond coating can be on the entire file or only on a tip. The possibility to lock it into 12 different positions (30°) make Bevelshape files extremely versatile for the following applications:

- Margin bevelling for
  - Anterior composites
  - Composite slots
  - Inlays and onlays
- Margin finishing in veneer preparations
- Crown preparations
  - Margin finishing in chamfer preparation
  - Bevelling in shoulder preparation

To be used in combination with:  
 ■ Intensiv Swingle, WG-69 LT Cons (with light)

- Packaging
- Single File
  - 6 pieces (Ref. .../6)
  - 12 pieces (Ref. .../12)



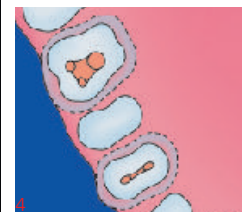
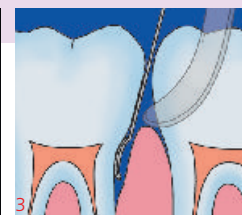
<b>Ref. 103</b>									
µm		40	25	15	40	25	15		
514	■	BS40			BS40T				
514	□		BS25			BS25T			
504	■			BS15			BS15T		
		Bevelshape whole length on one side diamond-coated, axially and distally bent				Bevelshape distally diamond-coated (for crown preparations), axially and distally bent			

# Intensiv Rootshape

Clinically tested by the University of Bern, Switzerland



Checking for and removal of soft microbiological plaque, concretions, and filling excesses on the root surface are considered today the essential aspect of the periodontal therapy. The Rootshape files are ideal tools for this type of treatment.



1:1

To be used in combination with:  
 ■ Intensiv Swingle, WG-69 LT (with light)

- Flexible files in two different lengths (11 and 16 mm) with spoon-shaped working ends that are diamond coated on their convex side.
- Grits: 40, 15, and 4µm.
- Easy access to difficult-to-reach morphological areas.
- Excellent tactile identification of coatings and excess material.
- Operative pressure controlled by means of flexible files.

- 1) Removal of subgingival plaque
- 2) The shape of the file ideally adapts to the root surface
- 3) Access by the Rootshape file compared to other instruments
- 4) Smooth finishing of concavity achieved thanks to the rounded tips

The special diamond coating only on the convex tip of the file and the availability in two different lengths and in three sizes, make the Rootshape files usable in the following applications:

- Removal of subgingival plaque with full protection of the root tissues and periodontium, possible thanks to files with micrograin 4µm.
- Deep root cleaning with perfectly smooth surfaces achieved thanks to decreasing grain sizes that allow an effective finishing (with the file at 40µm) followed by an optimal smoothing (with the file at 15µm).
- Morphological root corrections (odontoplasty).

- Packaging

  - Single File
  - 6 pieces (Ref. .../6)
  - 12 pieces (Ref. .../12)



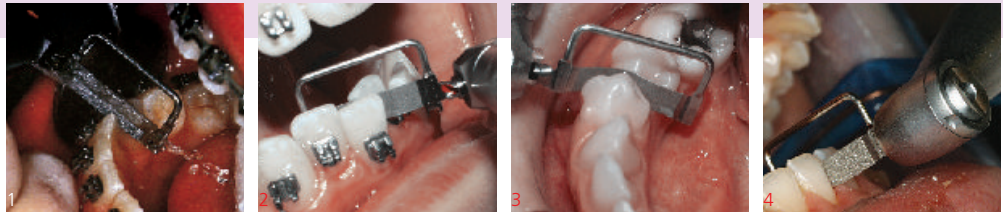
<b>Ref. 109</b>								
L mm	11.0	11.0	11.0		16.0	16.0	16.0	
µm	40	15	4		40	15	4	
514	■	RS40			RS40L			
504	■		RS15			RS15L		
484	■			RS4			RS4L	

# Intensiv Ortho-Strips System, Ortho-Strips One-Sided

Clinically tested by the University of Zurich, Switzerland



1:1



When opening the interdental space and reducing, finishing and polishing enamel in orthodontics, care must be taken to avoid grooves and scratches. It is also important to proceed systematically, following a coarse-to-fine sequence in selecting grits. Unlike manual strips, the Ortho-Strips System and the Ortho-Strips One-Sided provides rapid, controlled enamel reduction followed by polishing without unnecessary removal of healthy tooth substance.

The main benefits of this system compared to traditional systems are:

- Efficient opening of the interdental contact points
- Rapid controlled reduction bilateral (Ortho-Strips System) or lateral (Ortho-Strips One-Sided) of the enamel
- Proximal contouring, finishing and polishing of both adjacent teeth in a single procedure
- No injuries to patient (lips) or dentist (fingers)
- Preservation of healthy tooth substance in the adjacent teeth (Ortho-Strips One-Sided).

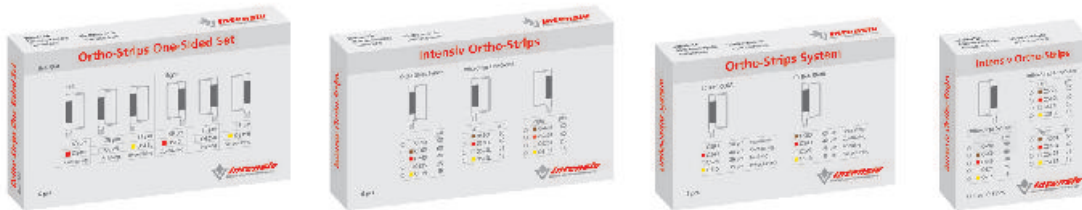
- 1) Opening of the interdental area with OS90
- 2) Bilateral enamel reduction with OS40
- 3) Finishing of a premolar distally with OS25R
- 4) Prepolishing of a canine distally with OS15L

To be used in combination with:

- Intensiv Swingle, WG-69 LT Ortho (with light)



1:1



## Ortho-Strips One-Sided Set

	Left			Right		
<b>Ref. 064</b>	40	25	15	40	25	15
514 ■	OS40L			OS40R		
514 □		OS25L			OS25R	
504 ■			OS15L			OS15R
	Contouring	Finishing	Pre-polishing	Contouring	Finishing	Pre-polishing
	Diamond-coated on one side					

Left	
<b>Ref. OS60L</b>	
514 ■	OS60L
514 □	
Right	
<b>Ref. OS60R</b>	
514 ■	OS60R
514 □	

## Ortho-Strips System

	90	40	25	15
<b>Ref. 060A</b>				
524	OS90			
514 ■		OS40		
514 □			OS25	
504 ■				OS15
	Separating	Contouring	Finishing	Pre-polishing
	Diamond-coated on both sides			

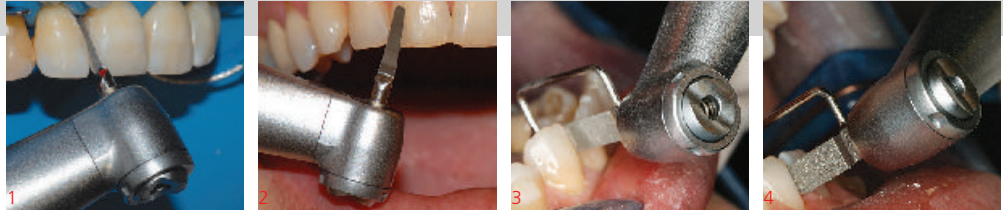
	60	40	25	15
<b>Ref. 060B</b>				
514 ■	OS60			
514 ■		OS40		
514 □			OS25	
504 ■				OS15
	Reduction	Contouring	Finishing	Pre-polishing
	Diamond-coated on both sides			



# Intensiv Swingle

Clinically tested by the Universities of Zurich and Bern, Switzerland

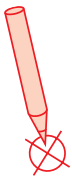
**New**



The new contra-angle Intensiv Swingle for use of oscillating files and strips. The contra angle has 2 functions in conjunction: free rotating for use of diamond coated files like Intensiv Proxoshape and in a proper chosen fixed position for use of diamond coated Intensiv Ortho-Strips for IPR technique in orthodontics.

A simple to move toggle switch at the contra-angle head permits to choose between free rotating or fixed position of the files. The contra-angle head is of small size to allow a proper view on the operating field. The ergonomic design of the contra-angle results in a good grip and allows a well-directed positioning to the operating field.

1-2) Clinical pictures:  
Dr. Simona Giani,  
Varese, Italy  
3-4) Clinical pictures:  
Dr. Francesco Garino,  
Turin, Italy



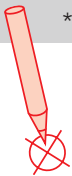
## Starter Kit Restorations Intensiv Swingle, WG-69 LT Cons, W&H Synea, with light

Content:  
Contra-Angle, Ref. WG-69 LT \*  
Ejector, Ref. 053  
Spray canal cleaner needle, Ref. 054  
+

Intensiv Proxoshape, Ref. PS1  
Intensiv Proxoshape, Ref. PS2  
Intensiv Proxoshape, Ref. PS3



\* Contra-Angle without light: WG-69 A



## Starter Kit Orthodontics Intensiv Swingle, WG-69 LT Ortho, W&H Synea, with light

Content:  
Contra-Angle, Ref. WG-69 LT \*  
Ejector, Ref. 053  
Spray canal cleaner needle, Ref. 054  
+

Intensiv Ortho-Strips, Ref. OS90  
Intensiv Ortho-Strips, Ref. OS40  
Intensiv Ortho-Strips, Ref. OS15

