

Natural fit
and
flexibility



CERASMART™270

from GC

Force absorbing hybrid ceramic
CAD/CAM block

GC

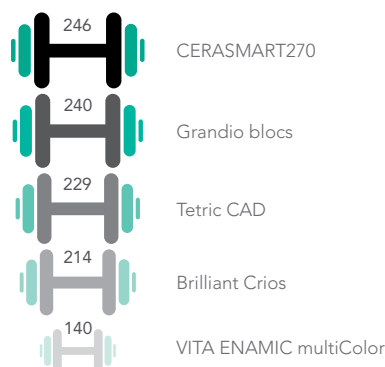
CERASMART270_{from} GC

Smart material for smart applications!

CERASMART270 is an aesthetic hybrid block made to provide fast and long lasting clinical success. Thanks to the newly developed “**Full Coverage Silane Coating**” (FSC) with **improved nanofiller technology**, CERASMART270 offers high physical and aesthetic properties. The milling is fast and efficient, making it possible to create a qualitative restoration with fine margins and optimal fit in a very short time. Additionally, it can be polished or characterised for more vibrant aesthetics. CERASMART270 is the right block to use, be it for a quick onlay or a challenging wear case.

Superior strength to endure mastication forces

- **High filler rate** thanks to FSC technology
- **Improved flexural strength** for restorations that resist time
- High **resistance to fracture**

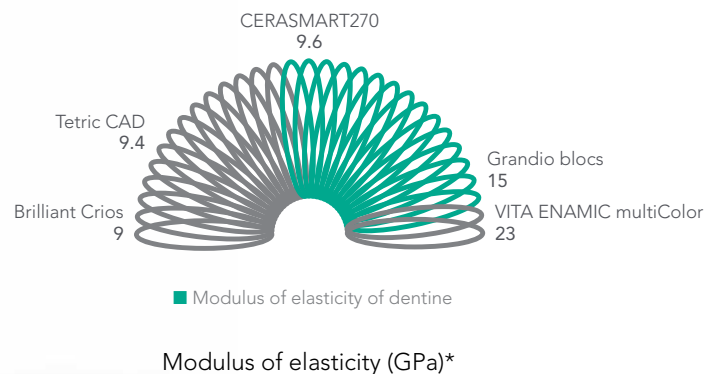


Three point flexural strength (MPa)*



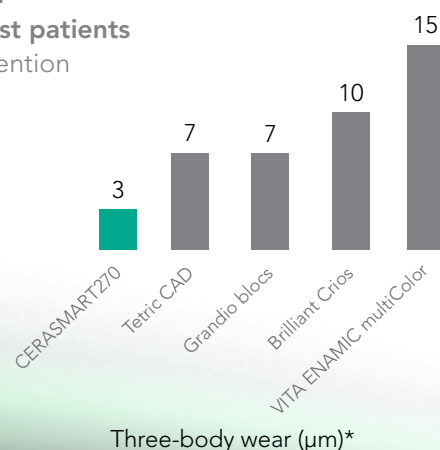
Flexibility to absorb shock effects

- **Less stress peaks** during chewing
- Decreased risk of **material fatigue**
- Extremely well suited **for implant** restorations



Wear resistance for long lasting restorations

- **Very low wear**
- Ideal for **bruxist patients**
- High gloss retention



Three-body wear (µm)*

*Source: GC R&D, Japan, 2018. Data on file

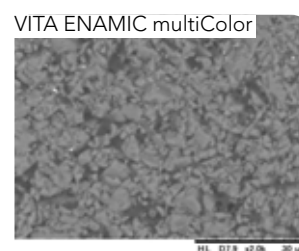
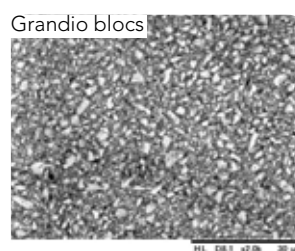
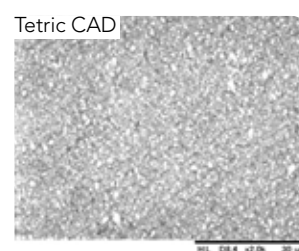
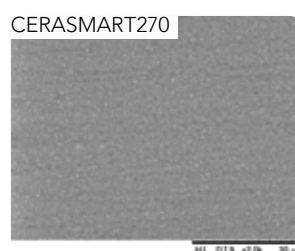
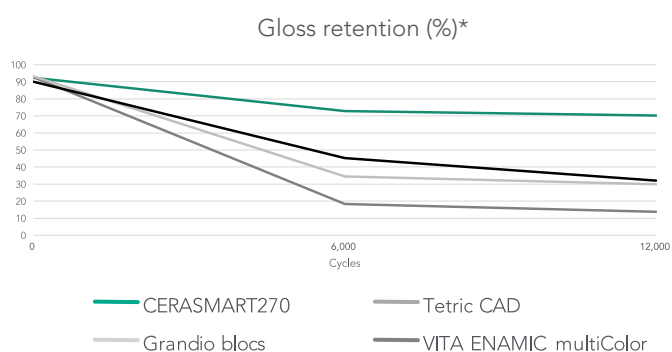
Flexible and Precise

Sharp margins that ensure a smooth transition



Very precise and smooth margins, without chipping, after quick and easy milling to guarantee a natural fit.

Superior polishability and gloss retention



SEM images of CERASMART270 in comparison to competitors*

Thanks to its fine-filler content, CERASMART270 is very easily polished and maintains a much higher gloss rate than its competitors for the same amount of time.

Shades that blend in naturally



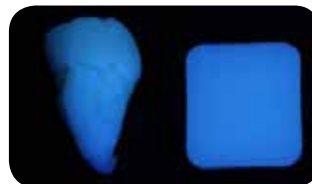
For a **natural smile** using only one shade.



Courtesy of MDT C. Hannker, Germany

Optimal fluorescence and translucency

Natural tooth CERASMART270



Beautiful colours for a natural appearance. Warm, lifelike shades with an **optimally balanced fluorescence** and **opalescence**.

Natural tooth CERASMART270



Precise and Beautiful

Choose your finishing path

Characterisation

Because everything looks better in colour

Add character to your restoration with the stroke of a brush using OPTIGLAZE color, a ready to use and wear resistant glossy coating.



You can choose from a wide variety of colours or use the Clear glaze to add gloss only.

Polishing

Fast and easy polishing

An impressive gloss level can be obtained by just some simple polishing steps.



Polishing can be done with your standard polishing wheels and burs.

Easy and fast pre-treatment and luting options

Etch or Sandblast



CERASMART270 is the only hybrid ceramic material that can be **etched** with hydrofluoric acid **or** can be **sandblasted**.

Silane or MDP



In both cases, the use of the universal **G-Multi PRIMER** will always be a good choice, since it contains both silane and MDP.

Pre-treat the tooth



Choose your etching mode depending on the presence of enamel and dentin on your preparation. Apply a bonding agent such as **G-Premio BOND**.

Lute



Use an **adhesive luting agent** such as G-CEM LinkForce or G-CEM Veneer.

Courtesy of Dr. P. Dimitrov, Bulgaria

Luting options for restorations that last



G-CEM LinkForce
Universal dual cure resin cement with trusted performance.



G-CEM Veneer
Light-cured resin cement for high aesthetic demands.



Whenever in doubt the GC Luting App is there to help you for a correct protocol.

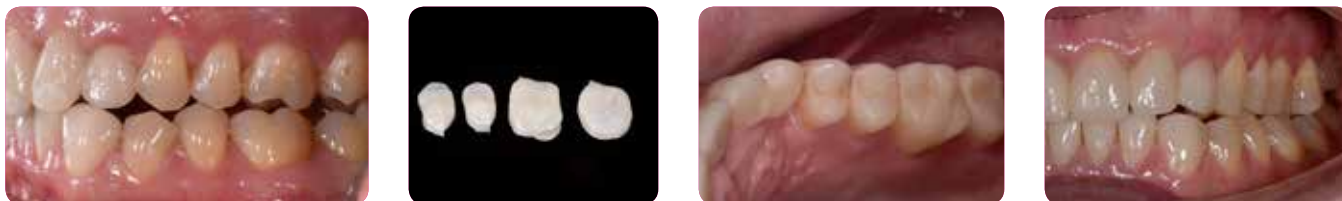
Beautiful and Easy

Precision that lasts.

Aesthetics that do not fade.

Increase of the vertical dimension

With its high flexural strength and breaking energy, CERASMART270 is perfectly suited to solve challenging occlusal situations. Its balanced surface hardness will be especially beneficial in reducing the wear of the opposing dentition, while ensuring a long-lasting gloss of the restoration.



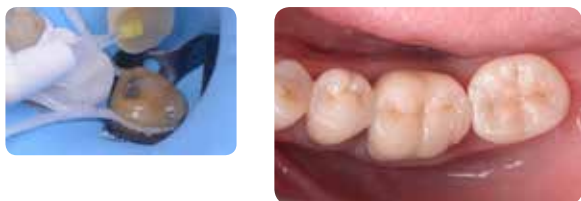
Courtesy of Dr. C. Moussally, France

Single visit restorations

With CERASMART270 you can create durable aesthetic restorations with optimal fit in a single visit. The restoration will be milled in a few minutes and yet it will be very friendly to your milling burs.

Replacement of a large composite restoration with parapulpal pins

The right choice for large, load-bearing restorations.



Courtesy of Dr. D. Gerdolle, Switzerland

Implant-supported crown

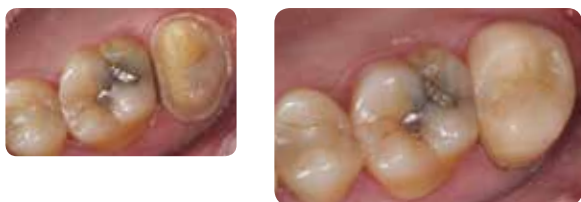
The elasticity of CERASMART270 is especially useful when placing an implant supported crown.



Courtesy of Dr. J. Tapia Guadix, Spain

Restoration of a second molar

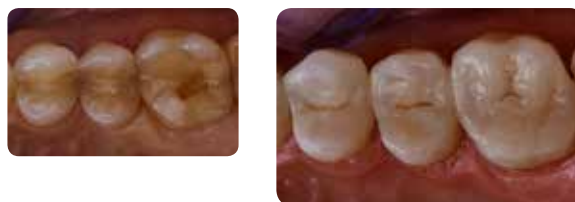
Natural blending with only one shade make it a great material for a standard molar restoration.



Courtesy of Dr. Y. Roos, Spain

Restoration of a quadrant

Perfect for creating several restorations in one appointment.



Courtesy of Dr. G. Witkowski, Poland

CERASMART270 from GC

Natural fit and flexibility



CEREC						
Shade	Size	Ref.	Size	Ref.	Size	Ref.
A1 HT	12	12540	14	12576	14L	12612
A2 HT	12	12541	14	12577	14L	12613
A3 HT	12	12542	14	12578	14L	12614
A3.5 HT	12	12543	14	12579	14L	12615
B1 HT	12	12544	14	12580	14L	12616
A1 LT	12	12545	14	12581	14L	12617
A2 LT	12	12546	14	12582	14L	12618
A3 LT	12	12547	14	12583	14L	12619
A3.5 LT	12	12548	14	12584	14L	12620
B1 LT	12	12550	14	12586	14L	12622
BL	12	12551	14	12587	14L	12623

Universal						
Shade	Size	Ref.	Size	Ref.	Size	Ref.
A1 HT	12	12552	14	12588	14L	12624
A2 HT	12	12553	14	12589	14L	12625
A3 HT	12	12554	14	12590	14L	12626
A3.5 HT	12	12555	14	12591	14L	12627
B1 HT	12	12556	14	12592	14L	12628
A1 LT	12	12557	14	12593	14L	12629
A2 LT	12	12558	14	12594	14L	12630
A3 LT	12	12559	14	12595	14L	12631
A3.5 LT	12	12560	14	12596	14L	12632
B1 LT	12	12562	14	12598	14L	12634
BL	12	12563	14	12599	14L	12635

Related products



G-CEM LinkForce



G-CEM Veneer



OPTIGLAZE color



DIAPOLISHER Paste

CERASMART270, DIAPOLISHER Paste, G-CEM LinkForce, G-CEM Veneer, G-Premio BOND, G-Multi PRIMER and OPTIGLAZE color are trademarks of GC. Brilliant Crios, Grandio blocs, Tetric CAD, VITA Enamic multiColor and CEREC are not trademarks of GC.

GC EUROPE N.V.

Head Office
Researchpark
Haasrode-Leuven 1240
Interleuvenlaan 33
B-3001 Leuven
Tel. +32.16.74.10.00
Fax. +32.16.40.48.32
info.gce@gc.dental
<http://www.gceurope.com>

GC UNITED KINGDOM Ltd.

Coopers Court
Newport Pagnell
UK-Bucks. MK16 8JS
Tel. +44.1908.218.999
Fax. +44.1908.218.900
info.uk@gc.dental
<http://uk.gceurope.com>

