



CLINICAL
PERFORMANCE
NEVER LOOKED
SO GOOD.

NEW!

SmartLite[®] Pro
Modular LED Curing Light

SmartLite[®] Pro

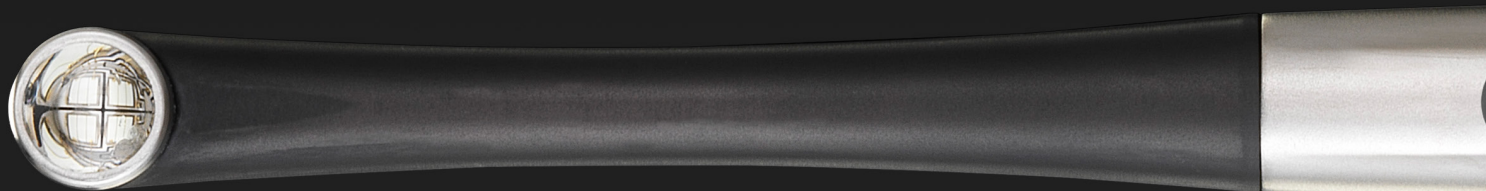
More than just a curing light

⊕ Metal housing

Stainless steel and anodized aluminum provide robust durability, year after year.

⊕ Single-button simplicity

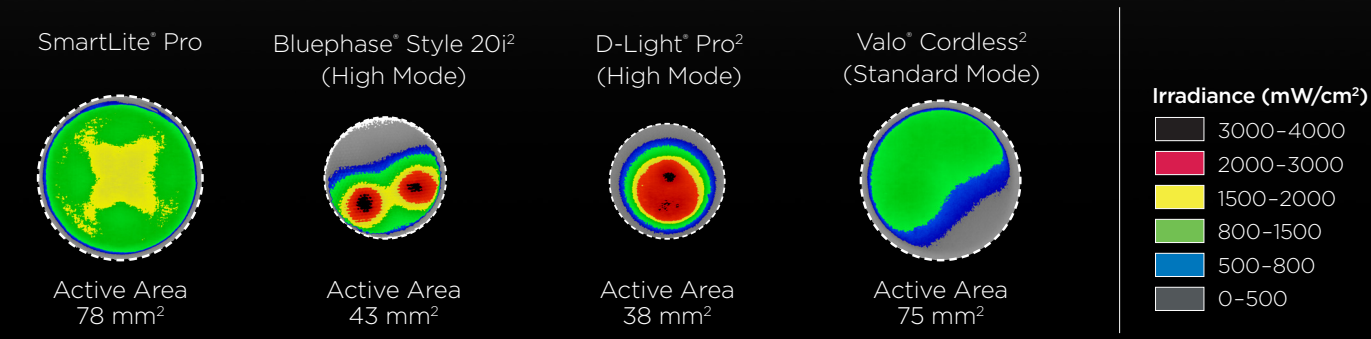
Intuitive one-button operation with audible and tactile signals allows you to focus on what really matters.



⊕ State of the art LED-optics

Optimized 4 LED-light design provides a uniform light distribution over the whole active curing area.
Irradiance: $\sim 1.250 \text{ mW/cm}^2$
Wavelength: 453-478 nm

Beam profile comparison at 0 mm distance (Blue Light Range)¹



1. Source: BlueLight Analytics Inc.

2. Not a registered trademark of Dentsply Sirona.

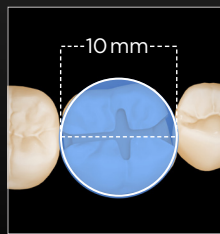
⊕ Versatility

The SmartLite® Pro features a modular design with interchangeable tips for a variety of clinical indications. The design allows for the addition of new tips as technology advances in the future.

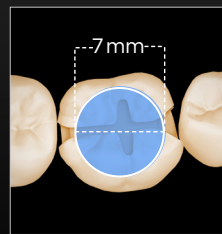


⊕ Reliable clinical outcomes

Large 10 mm active curing diameter to cover bigger restorations combined with an excellent beam collimation³ for reliable curing even over larger distances.



SmartLite® Pro

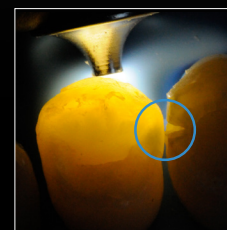


Competitor



⊕ Transillumination diagnostic tip

The additional Transillumination Tip is a diagnostic aid for the visualization of interproximal caries, evaluation of cracked teeth and the illumination of endodontic access. The tip has a 1 mm focused light output with 2 different settings (anterior and posterior).



3. Collimation is when the beams are distributed in parallel for optimal distribution.



Multifunctional charging base

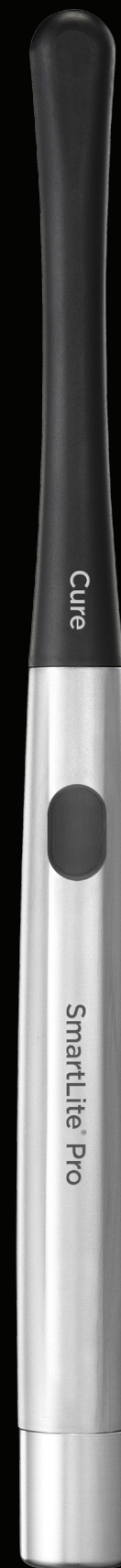
The SmartLite® Pro comes with a modern-design charging base with a built-in Radiometer and room for extra tips. The intuitive battery system includes two quick connect batteries for constant availability. The latest generation LiFePO4 battery technology ensures a full day of clinical operation with only one charge.

Ordering Information

| | | |
|--------|--|---|
| 644400 | SmartLite® Pro Introductory Kit | 1 x Handpiece 1 x Cure Tip 1 x Transillumination Tip 2 x Batteries 1 x Charging Base Accessories |
| 644409 | SmartLite® Pro Basic Kit | 1 x Handpiece 1 x Cure Tip 2 x Batteries 1 x Charging Base Accessories |
| 644401 | SmartLite® Pro Battery Refill | |
| 644402 | SmartLite® Pro Sleeves Refill | |
| 644403 | SmartLite® Pro Eye Protection Shields Refill | |
| 644404 | SmartLite® Pro Power Connector Refill | |
| 644405 | SmartLite® Pro Transillumination Tip Refill | |
| 644406 | SmartLite® Pro PolyCure Tip Refill | |
| 644407 | SmartLite® Pro Cure Tip Refill | |



SmartLite® Pro
Modular LED Curing Light



For more information visit www.dentsplysirona.com